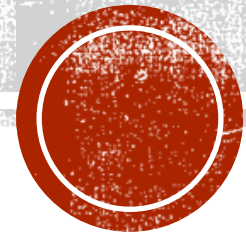
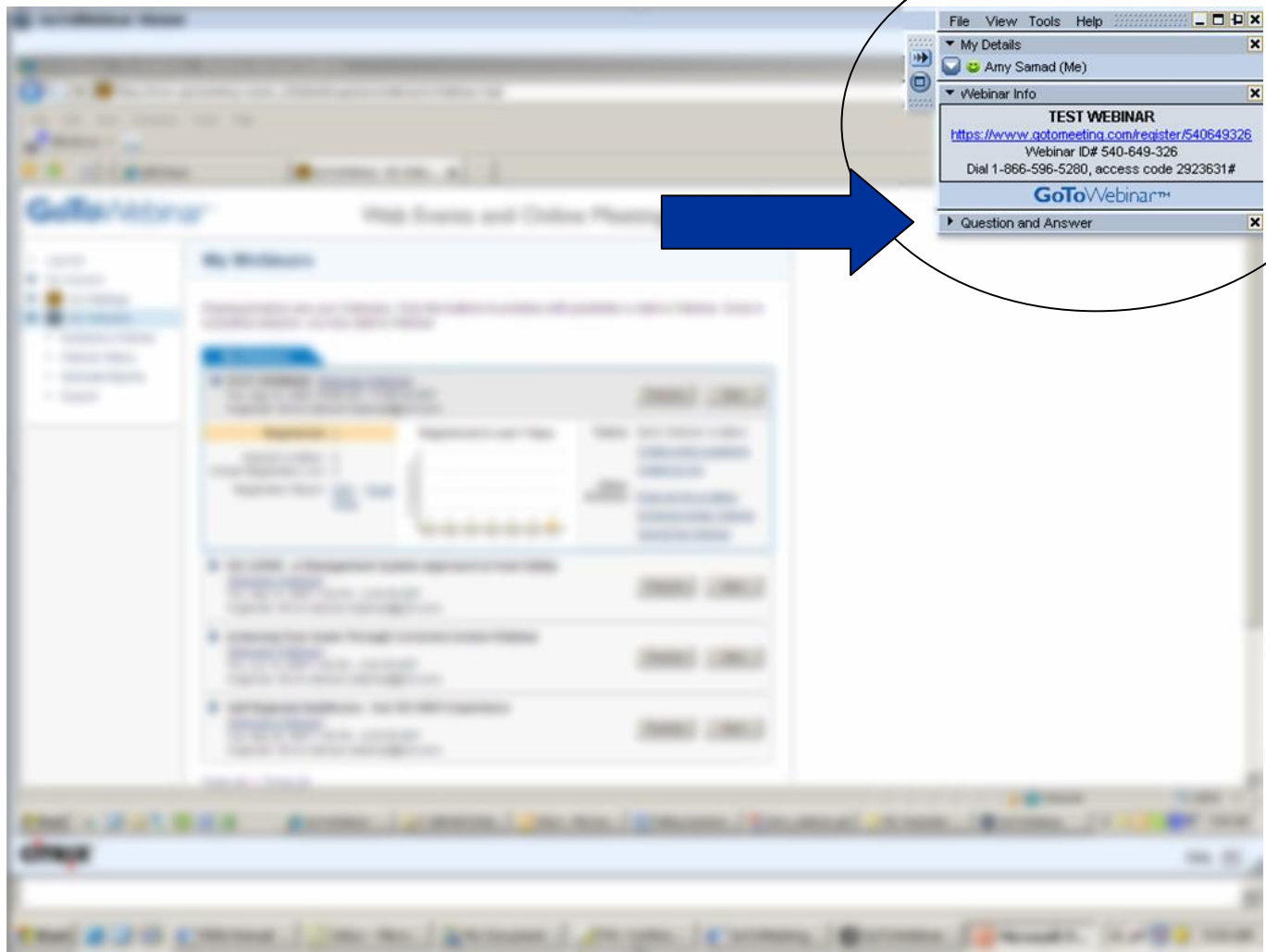


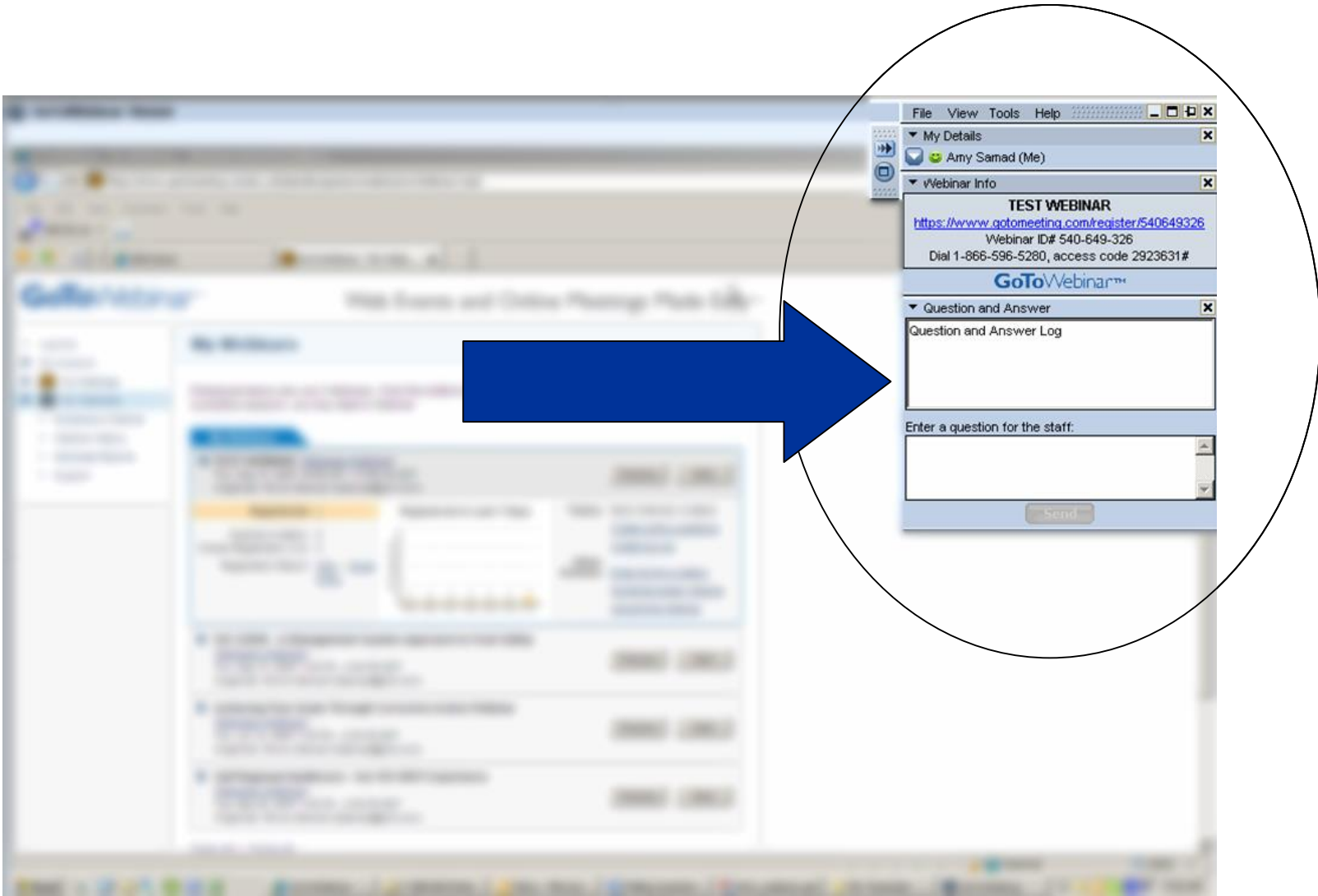


ENTERPRISE RISK
MANAGEMENT – VOLUME 2 –
EFFECTIVELY COMMUNICATING
RISKS FROM THE SHOP FLOOR
TO THE BOARDROOM

PJRFSI – Your Partner for Food Safety



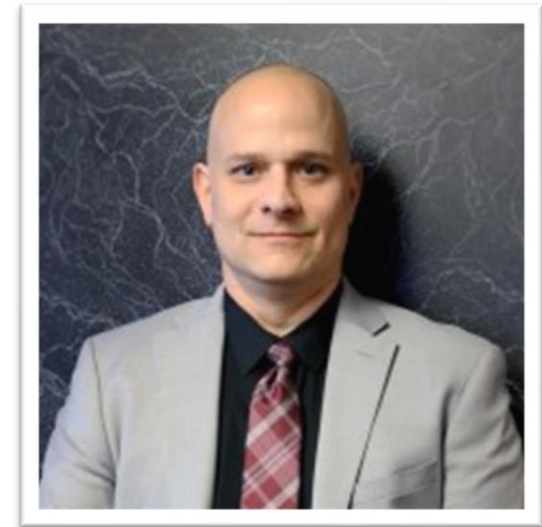




PJRFSI – Partner for Food Safety

Paul Damaren

Senior Vice President of Food Safety &
Supply Chain, PJRFSI





Melanie Neumann, J.D., M.S.
EVP and General Counsel,
Matrix Sciences International,
Inc.

mneumann@matrixsciences.com

www.matrixsciences.com

**BECAUSE
CONFIDENCE
MATTERS**

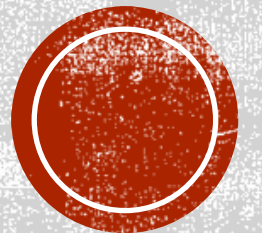
Expertise
Integrity
Communication

**GUV CONSULTING
INTERNATIONAL LLC**

Neil Marshall, Managing Director
neimarshall@gmail.com
+1-404-291-2085



**NEIL
MARSHALL**



Benefits of an Integrated Food Safety Enterprise Risk Management (ERM) Program

- + **Monitor, Mitigate & Measure** Operational, Regulatory & Brand Risk
- + **Accelerate** Risk Communication
- + **Translate** Food Safety Risks for Boardroom Rewards
- + **Represent** Risks with Effective Visual Dashboards
- + **Influence** C-Suite Leadership Decision Making
- + **X-functional** Inclusive Risk Management

UPCOMING WEBINARS

[HTTPS://WWW.PJRFSI.COM/WEBINARS/](https://www.pjrfsi.com/webinars/)



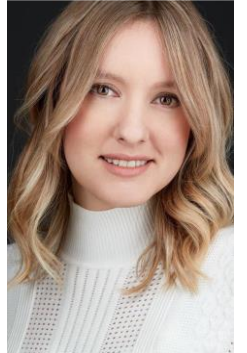
Date: Thursday May 27th, 2021 – 2:00pm – 3:00pm EST

Webinar Title: [“Issue vs. Crisis” Best Practice for Becoming Crisis Ready, A Cultural Approach](#)

Webinar Description - Join Founder and CEO of Crisis Ready Institute, creator of the Crisis Ready Model, and author of “Crisis Ready: Building an Invincible Brand in an Uncertain World”, Melissa Agnes, along with Paul Damaren, SVP, PJRFSI for a robust discussion on crisis preparedness, reputation management, and brand protection. Is crisis preparedness, in other words becoming Crisis Ready, a cultural approach? In this session we will looking at cross-organizational mindset, skillset and capabilities required to survive in 2021. What is the foundation of an effective crisis response? What is it that you should be striving to achieve and why is it important? What does an effective crisis response really look like? What are the emotional triggers that can have impact on the brand and how do you get ahead of that, in real-time? Standards on the horizon and how not being Crisis Ready can trigger and escalate a loss of trust and material impact on your brand, your operations and your reputation.

Speakers:

- Melissa Agnes, CEO, Crisis Ready Institute



Date: Thursday June 3rd, 2021 – 2:00pm – 3:00pm EST

Webinar Title: [Supplier Performance and History – How to Review it for FSVP and Supply Chain Management](#)

Webinar Description - Join Jennifer Crandall, CEO from Safe Food En Route and SVP, PJRFSI in an interactive discussion as we speak about the benefits of tracking supplier performance and history and how staying on top of this will prepare your business for FSVP compliance and strong supply chain management programs.

Speakers:

- Jennifer Crandall, CEO & Co-Founder





You've
got **QUESTIONS**
we've got **ANSWERS**