

The Growth, Challenges, Certification and Sustainability of CBD in 2021 & Beyond



JIT Experts Hive

President and founder of JIT Experts Hive



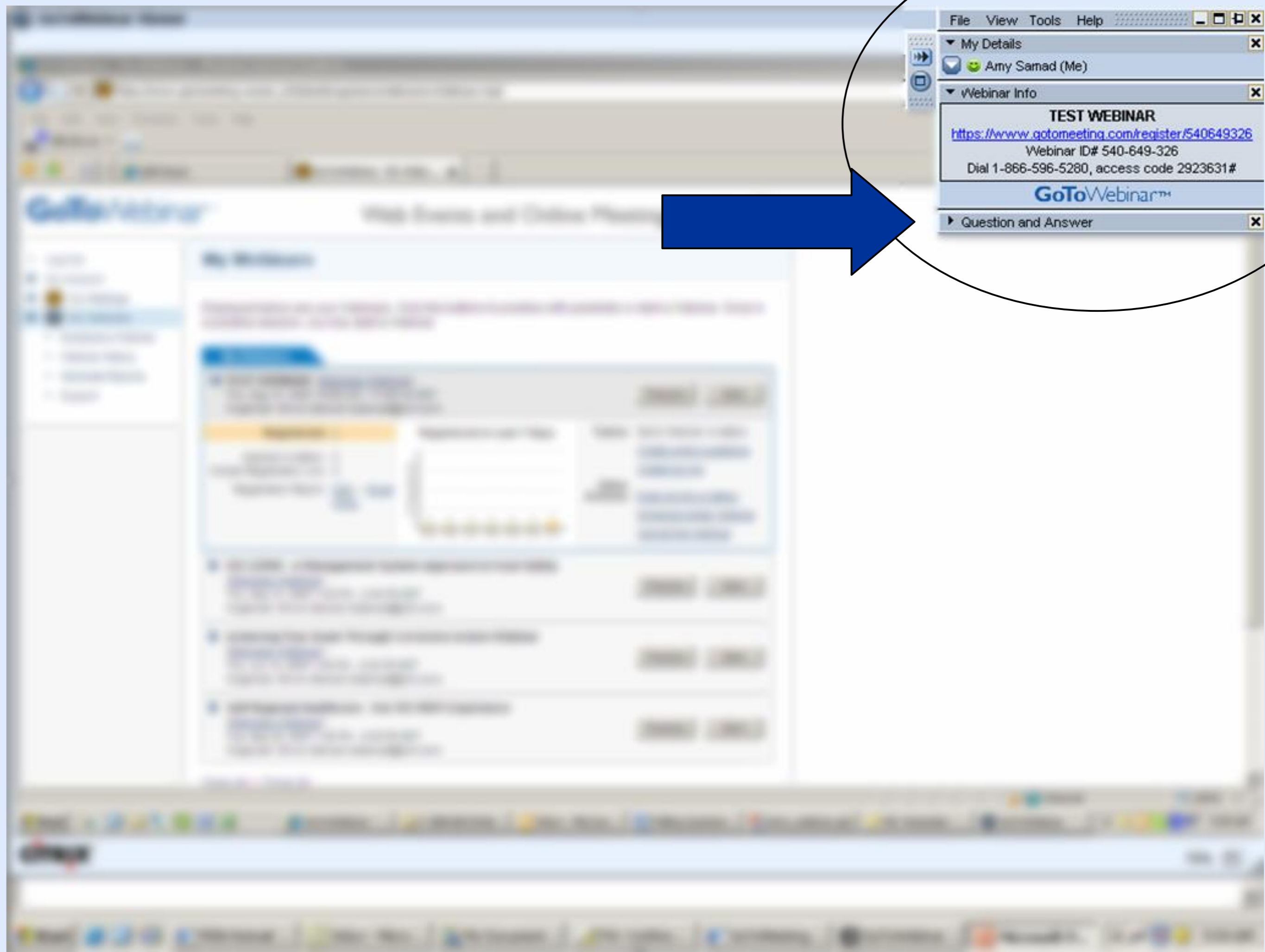
Executive Director, GRMA



Vice President of Compliance and Science at Chief Holdings



Cannabis & Hemp Division Manager



File View Tools Help

My Details

Amy Samad (Me)

Webinar Info

TEST WEBINAR

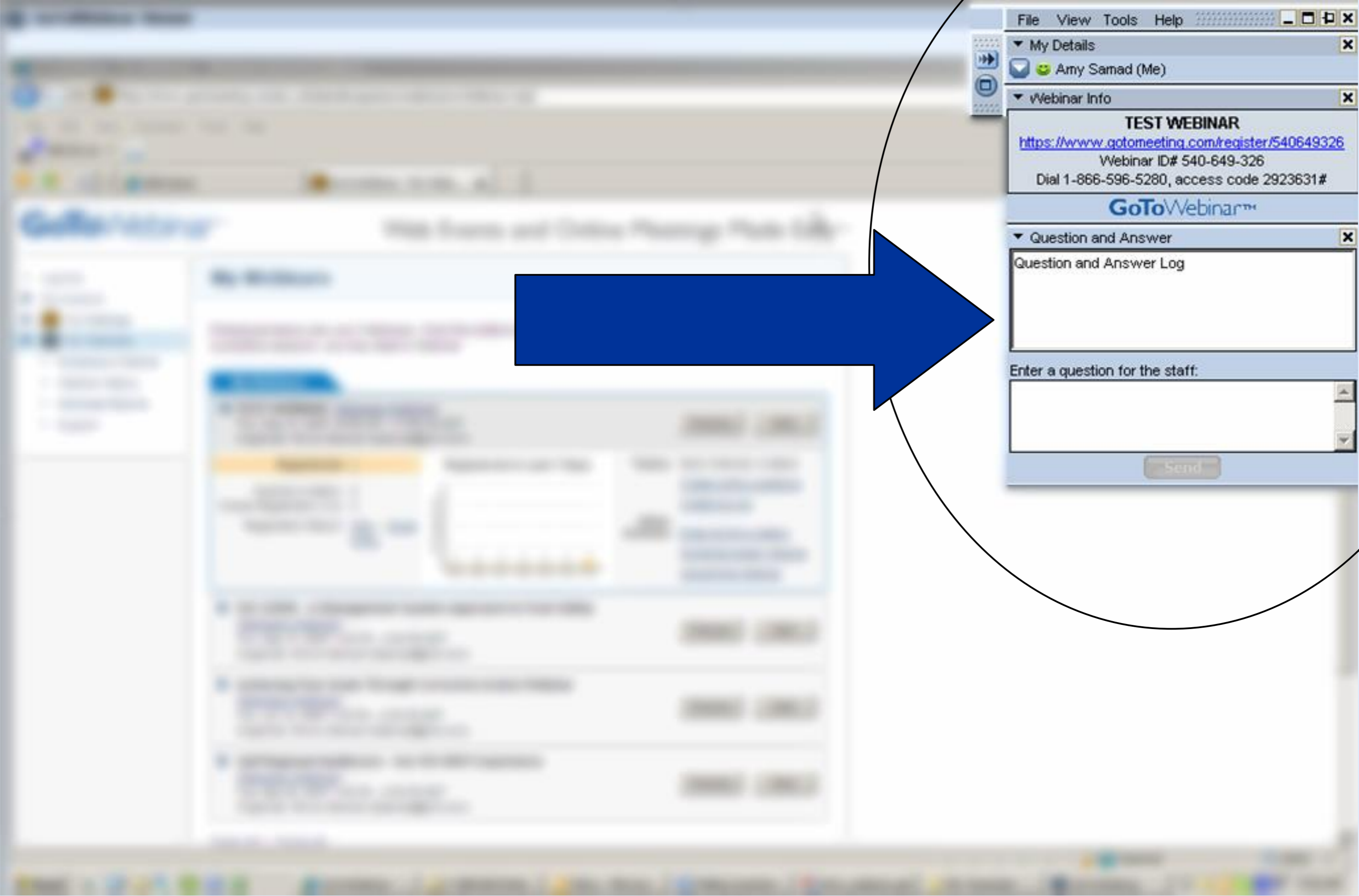
<https://www.gotomeeting.com/register/540649326>

Webinar ID# 540-649-326

Dial 1-866-596-5280, access code 2923631#

GoToWebinar™

Question and Answer





Paul Damaren

Senior Vice President of
Food Safety & Supply
Chain, PJRFSI



PJRFSI – Your Partner for Food Safety

Neshat Soofi

25+ years in the CPG industry

E-commerce, Retail, Manufacturing, Supply Chain,
Private Label

Startups to Fortune 500 Companies

JIT Experts Hive- President

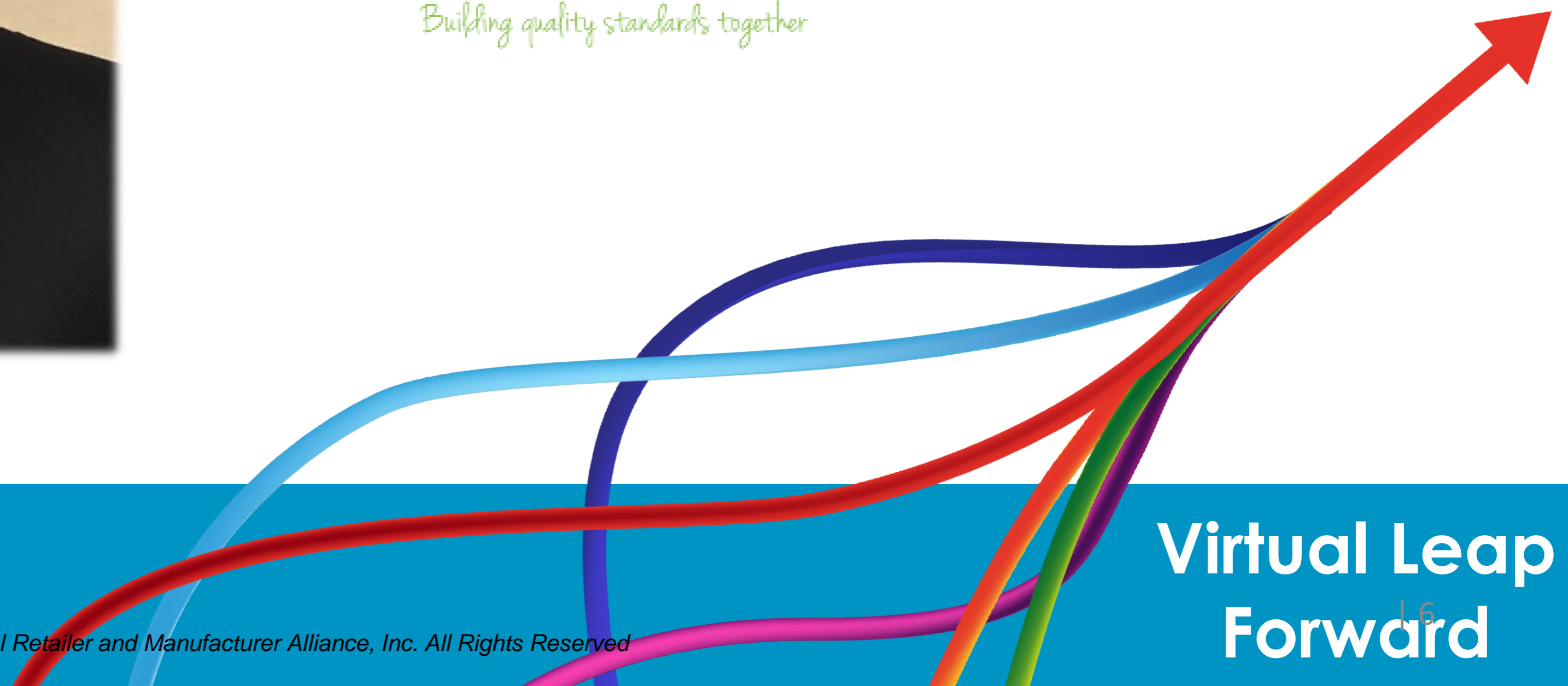
Providing Just-In-Time Expertise to Help Consumer Product
Businesses Thrive

Categories: Cosmetics, Beauty, Personal Care, Food,
Beverage, Supplements, CBD, Pet , Household
Cleaners, Home Goods, OTC Drugs, OTC Medical
Devices,...





Allyn Shultis
Executive Director
GRMA



**Virtual Leap
Forward**



Jennifer Knaack

Cheef Holdings is focused on finding natural remedies that provide stability and balance to people and pets around the world.

Industry-leading advocate in CBD wellness for humans and pets.

Vertically integrated in digital marketing, manufacturing, and wellness industries

Product lines include: CBD pet treats for cats and dogs, CBD for horses, tinctures, gummies, beverages, flower, concentrates and topicals



CHEEF
HOLDINGS

Vice President of Science
& Compliance

PlantedPot

HOLLYWEED

healthypetables

EXHALE

CHEEF
BOTANICALS

holistapet

pet hemp
company





PJRFSI Cannabis & Hemp Division Manager

Brett McMillen



- Division Manager for Cannabis & Hemp Programs
- Division Manager for Laboratory Accreditation Unit
- ISO 17025, ISO 9001, ISO 22000, GMP, GAP, Organic
- Laboratory Accreditation for ISO 17025
- State Level Regulatory Certification Expert

The Growth, Challenges, Certification and Sustainability of CBD in 2021 & Beyond



JIT Experts Hive

President and founder of JIT Experts Hive



Executive Director, GRMA



Vice President of Compliance and Science at Chief Holdings



Cannabis & Hemp Division Manager

Coalition of Members

- Balanced group of members
- Manufacturers, Retailers, Labs/CBs/SDO, Industry Associations

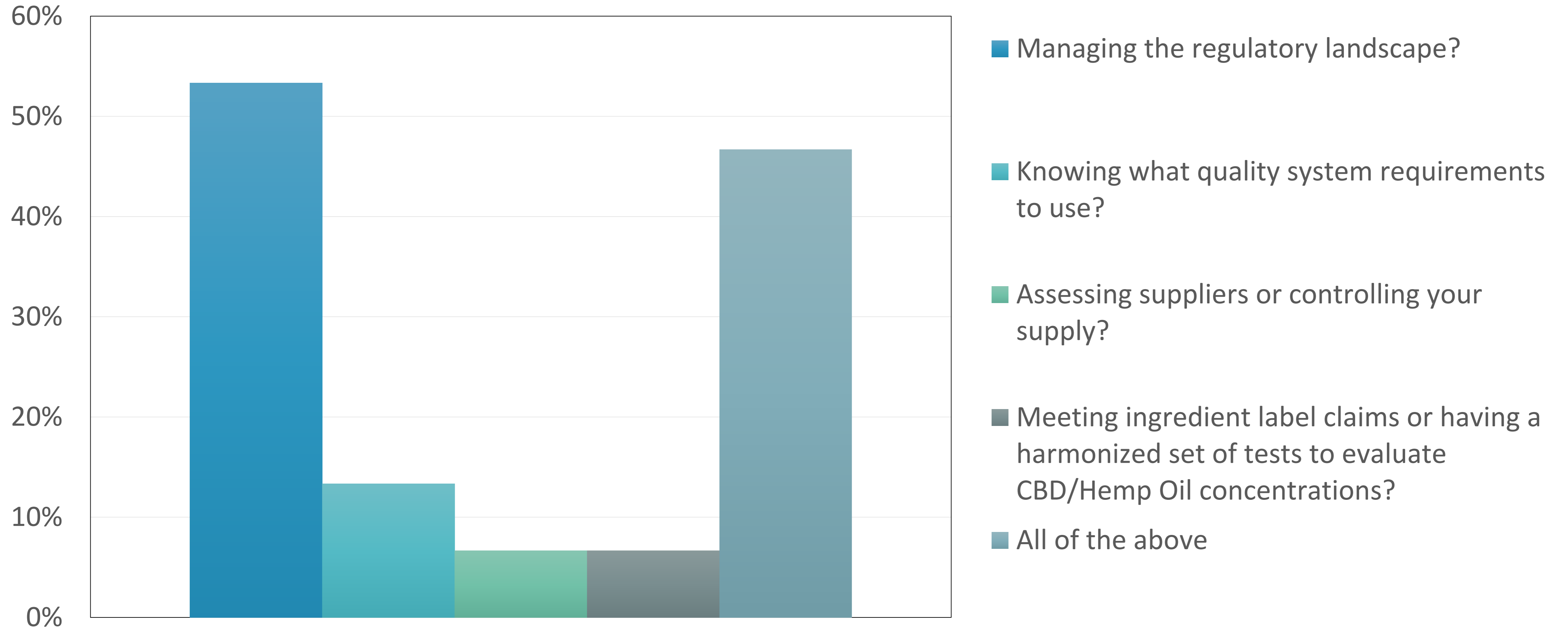
QST and GMP for Health & Wellness

- Products using CBD and/or Hemp Oil as an Ingredient
 - GMP
 - Supply Chain, Chain of Custody & COA
 - Testing

Harmonized Industry Best Practices

- NSF/ANSI 455-2, 3, 4
- In alignment with anticipated federal & state regulatory requirements
- Evaluate vs global regulations and best practices

What do you see as being the biggest challenges that manufacturers face today?
(please select all that apply)



Upcoming Webinars



[The Importance of ESG in the Food Industry](#)

October 12, 2021 – 2:00 pm EST

Speaker: Fiona Humphries PIEMA, Technical Manager, Ethical Trade & Responsible Sourcing, BRCGS



[2022 – A In-Depth Look at Emerging Challenges & Risk Factors in the Food Industry](#)

October 21, 2021 – 2:00 pm EST

Speaker: Jennifer Crandall, CEO of Safe Food En Route, Jill Stuber, The Food Safety Coach and President, Evan Rosen of Excelsior Food Safety Solutions LLC





Audience Q&A

